

A woman with short brown hair, wearing a bright pink blazer over a white lace-up top and blue jeans, is smiling and holding a large blue and tan tote bag. She is standing in a retail store with shelves of various bags in the background. To her right, there is a mannequin wearing a cream-colored sweater and a table with more bags and a bouquet of blue and white flowers.

HV MFG

THE COUNCIL OF INDUSTRY MAGAZINE

FALL 2023

THE CHANGING MANUFACTURING LANDSCAPE

COMPANY PROFILE
Balchem Corporation

LEADER PROFILE
Kelly Lyndgaard
Unshattered

CYBERSECURITY

AI IN MANUFACTURING

REPORT FROM PATTERN FOR PROGRESS

RESOURCE GUIDE INSIDE



Working together to succeed

The Mid-Hudson Region is more than a place where we do business. It is home to our customers, clients, employees and community partners. The strength of our firm allows us to leverage our resources, expertise and data insights to help bolster communities and create a more inclusive economy for all.

At Chase we're focused on powering inclusive economic growth — because we believe we are only as strong as the communities we serve.



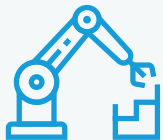
MAKE MORE OF WHAT'S YOURS®

The Mechatronics Lab in Dutchess Community College's new Center of Excellence for Industry & Innovation features state-of-the-art equipment and versatile training programs aligned with the diverse needs of your evolving industry – giving you the power to do more.

HANDS-ON TRAINING FOR TOMORROW'S SKILLS.

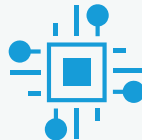
FLEXIBLE SCHEDULING FOR TODAY'S WORKFORCE.

4 TRAINING AREAS



Technical proficiency.
Cross-disciplinary innovation.
Our 6,000-square-foot facility
features three labs
focused on four in-demand
areas of expertise –
**Automation, Electrical,
HVAC and Mechanical.**

INDUSTRY-FOCUSED



Skills-based instruction
relevant to the work you do.
Build employee competence and
broaden your capacity with
training in **AC/DC Electricity,
Robotics, Pneumatics,
Supply Chain Automation,
Motors** and more.

CONVENIENT



Centrally located at the
intersection of **Rt. 9 and I-84**
in Fishkill. Designed to
accommodate the schedules
of working professionals.
Flexible in-person lab training,
supplemented by online
learning modules.



MANUFACTURING
SKILL STANDARDS
COUNCIL

Learn more at sunydutchess.edu/mechatronics
or contact Freddy Santiago, Coordinator of Mechatronics Programming
freddy.santiago1@sunydutchess.edu ■ (845) 790-3645

DUTCHESS
COMMUNITY COLLEGE



The Council of Industry
263 Route 17K, Suite 106
Newburgh, NY 12550



A COUNCIL OF INDUSTRY APPRENTICE PROGRAM PARTNER **BUILDING BETTER TRADESPEOPLE BY INVESTING IN YOUR CAREER**

Further your career, receive your certification, and become a member of the Viking family.

Learn more about the program by visiting CouncilOfIndustry.org/apprentice-program



SCAN ME

vikingpackaging.com

☎ 845-883-6325

🏠 845-883-6228

89 S. Ohioville Road
New Paltz, New York 12561